

FINITURE - FINISHES - ACABADOS



SIMBOLOGIA - SYMBOLS - SÍMBOLOS



Ignifugo.
Fireproof.
Ignifugo.



Lavare a mano alla temperatura massima indicata.
Hand wash at max temperature indicated.
Lavar a mano a la temperatura máxima indicada.



Non lavare.
Do not wash.
No lavar.



Non candeggiare.
Do not bleach.
No blanquear.



Lavare a secco con i solventi abituali, a base di percloroetilene, di solvente R113 e di idrocarbonio (ma senza tricloroetilene).
Dry clean with usual solvents, based on perchloroethylene, solvent R113 and hydrocarbon (no trichloroethylene).
Lavar en seco con solventes habituales a base de percloroetileno, de solvente R113 y de hidrocarburo (pero sin tricloroetileno).



Stirare con il ferro da stiro. I punti al centro del simbolo indicano la temperatura:
Un punto Stirare a ferro freddo (110°): acrilico, nylon, acetato.
Due punti Stirare a ferro caldo (150°): poliestere, lana.
Tre punti Stirare a ferro molto caldo (200°): cotone, lino.
Iron. The dots in the centre of the symbol indicate the temperature:
One dot: iron cold (110°): acrylic, nylon, acetate.
Two dots: iron warm (150°): polyester, wool.
Three dots: iron hot (200°): cotton, linen.
Planchar con plancha: Los puntos en el medio del símbolo indican la temperatura aconsejada.
Un punto: Planchar con plancha fría (110°): acrílico, nylon, acetato.
Dos puntos: Planchar con plancha caliente (150°): poliéster, lana.
Tres puntos: Planchar con plancha muy caliente (200°): algodón, lino



Non utilizzare l'asciugatrice.
Do not tumble dry.
No utilizar secadora.

FINITURE - FINISHES - ACABADOS

POLIPROPILENE - Polypropylene - Polypropyleno



PP20 Bianco - White - Blanco



PP21 Grigio perla - Pearl grey - Gris perla



PP7001 Grigio titanio - Titanium grey - Gris titanio



PP07 Grigio cemento - Cement grey - Gris cemento



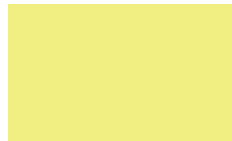
PP11 Antracite - Anthracite - Antracita



PP517 Grigio grafite - Graphite grey - Gris grafito



PP102C Giallo mimosa - Mimosa yellow - Amarillo mimosa



PP1016 Giallo limone - Lemon yellow - Amarillo limón



PP1023 Giallo mais - Corn yellow - Amarillo mais



PP1012 Senape - Mustard - Mostaza



PP514 Sabbia - Sand - Arena



PP02 Arancione - Orange - Naranja



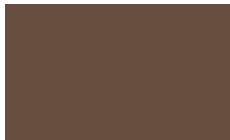
PP166U Mattone - Brick red - Ladrillo



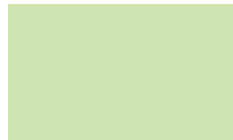
PP3020 Rosso - Red - Rojo



PP3005 Vinaccia - Burgundy - Orujo



PP22 Tabacco - Tobacco - Tabacco



PP06 Pistacchio - Pistachio - Pistacho



PP512 Verde avocado - Avocado green - Verde aguacate



PP6018 Verde tropicale - Tropical green - Verde tropical



PP513 Verde militare - Military green - Verde militar



PP17 Celeste - Sky blue - Celeste



PP4001 Viola - Purple - Violeta



PP08 Blu zaffiro - Sapphire blue - Azul zaffiro



PP5019 Blu Capri - Capri blue - Azul Capri



PP516 Blu navy - Navy blue - Azul marino



PP9001 Bianco crema - Off-white - Blanco crema



PP9010 Bianco puro - Pure white - Blanco puro



PP31 Nero carbone - Coal black - Negro carbón



PP32 Grigio ardesia - Slate grey - Gris pizarra



PP23 Grigio medio - Medium grey - Gris medio



PP24 Grigio luce - Light grey - Gris luz



PP25 Biscotto - Biscuit - Biscocho



PP26 Beige - Beige - Beige



PP27 Curry - Curry - Curry



PP28 Avorio - Ivory - Marfil



PP29 Verde oliva - Olive green -
Verde olivo



PP30 Verde kaki - Khaki green -
Verde caqui



PP33 Arancio carota - Carrot
orange - Naranja zanahoria



PP34 Pesca - Peach - Melocotón



***PP01** Nero - Black - Negro

* Il polipropilene presenta delle "ombreggiature" che risultano più evidenti nel colore nero rispetto agli altri. Sono comunque da ritenersi nella norma, perché sono una caratteristica intrinseca del materiale.
Polypropylene has "shadings" which are more evident in black than in the other colours. This is an intrinsic characteristic of polypropylene and therefore a normal feature of the material.
El polipropileno presenta "manchas" que resultan más evidentes en el color negro respecto a los otros colores. Siendo ésta una característica intrínseca del material, se retiene y considera normal.

POLIAMMIDE - Polyamide - Poliamida



PA101 Bianco - White - Blanco

PA117 Grigio siliceo - Silica grey - Gris siliceo

PA102 Nero - Black - Negro

PA114 Rosso - Red - Rojo



PA120 Giallo - Yellow - Amarillo

PA119 Verde - Green - Verde

PA121 Blu Capri - Capri blue - Azul Capri

POLIETILENE - Polyethylene - Polietileno



PE301 Giallo - Yellow - Amarillo

PE303 Verde - Green - Verde

PE302 Grigio - Grey - Gris

PE300 Bianco - White - Blanco

PE304 Neutro - Neutral - Neutral

POLIURETANO - Polyurethane - Poliuretano



PU02 Bianco - White - Blanco

PU12 Avorio - Ivory - Marfil

PU04 Argento - Silver - Plata

PU11 Antracite - Anthracite - Antracita

PU03 Nero - Black - Negro



PU06 Pistacchio - Pistachio - Pistacho

PU05 Viola - Purple - Violeta

PU01 Rosso - Red - Rojo

PU09 Bordeaux - Bordeaux - Bordeaux

PU10 Caffè - Coffee - Café

POLICARBONATO - Polycarbonate - Policarbonato

POLICARBONATO TRASPARENTE - Transparent polycarbonate - Policarbonato trasparente



PC103 Ghiaccio - Ice - Hielo



PC104 Fumé - Smoke-grey - Fumé



PC109 Ciclamino - Cyclamen - Ciclamino

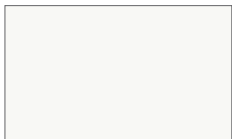


PC111 Ambra - Amber - Ambar



PC123 Vinaccia - Burgundy - Orujo

POLICARBONATO COPRENTE - Solid colour polycarbonate - Policarbonato opaco



PC101 Bianco - White - Blanco



PC102 Nero - Black - Negro -



PC114 Rosso - Red - Rojo



PC122 Verde militare - Military green - Verde militar



PC126 Antracite - Anthracite - Antracita



PC124 Giallo dalia - Dalia yellow - Amarillo dalia



PC125 Sabbia - Sand - Arena



PC127 Vinaccia - Burgundy - Orujo



PC128 Tabacco - Tobacco - Tabacco

SAN

SAN TRASPARENTI - Transparent SAN - SAN Transparente



SAN103 Ghiaccio - Ice - Hielo



SAN104 Fumé - Smoke-grey - Fumé

SAN COPRENTI - Solid colour SAN - SAN Color sólido



SAN101 Bianco - White - Blanco



SAN102 Nero - Black - Negro



SAN114 Rosso - Red - Rojo



SAN130 Verde foglia - Green leaf - Hoja verde



SAN117 Grigio siliceo - Silica grey - Gris siliceo



SAN118 Arancione - Orange - Naranja

LEGNO MULTISTRATO - Plywood - Madera multiestrato



LV01 Classic Sapelli Mocca



LV07 Classic Brown Olive Ash



LV03 Classic Black Cherry Elegant



LV04 Classic Amazakoue Elegant



LV05 Nimbus Sapelli Sycamore



LV06 Stratus Superior American Walnut



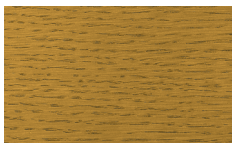
LR01
Rovere sbiancato
Whitened oak
Roble blanqueado



LR02
Rovere wengè
Wenge-stain oak
Roble wengué



LR03
Rovere naturale
Natural oak
Roble natural



LR04
Rovere verniciato ocra
Ochre painted oak
Roble pintado ocra



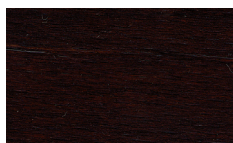
LR05
Rovere verniciato bordeaux
Bordeaux painted oak
Roble pintado bordeaux



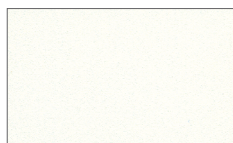
LR06
Rovere verniciato antracite
Anthracite painted oak
Roble pintado antracite



LF01
Faggio naturale
Natural beech
Haya natural



LF02
Faggio wengè
Wenge-stain beech
Haya wengué



LF03
Faggio laccato bianco
White lacquered beech
Haya lacada en blanco



LF04
Faggio laccato nero
Black lacquered beech
Haya lacada en negro



LFR01
Frassino naturale
Natural ash
Fresno natural



LFR02
Frassino wengè
Wenge ash
Fresno wengué



LFR03
Frassino sbiancato
Whitened ash
Fresno blanqueado

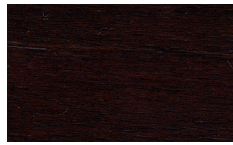


LFR04
Frassino verniciato grigio
Grey painted ash
Fresno pintado gris

MASSELLO DI FAGGIO - Solid beech - Madera maciza de haya



MAFGV
Faggio naturale
Natural beech
Haya natural



MAFC3
Faggio wengè
Wenge-stain beech
Haya wengué



MAF514
Faggio laccato sabbia
Sand lacquered beech
Haya lacada en arena



MAFLG6
Faggio laccato bianco
White lacquered beech
Haya lacada en blanco



MAFLG37
Faggio laccato antracite
Anthracite lacquered beech
Haya lacada en antracite



MAF01
Faggio laccato grigio siliceo
Silica grey lacquered beech
Haya lacada en gris siliceo



MAF02
Faggio laccato nero
Black lacquered beech
Haya lacada en negro



MAF03
Faggio laccato rosso
Red lacquered beech
Haya lacada en rojo



MAF04
Faggio laccato giallo
Yellow lacquered beech
Haya lacada en amarillo



MAF05
Faggio laccato verde
Green lacquered beech
Haya lacada en verde



MAF06
Faggio laccato blu Capri
Capri blue lacquered beech
Haya lacada en azul Capri

MASSELLO DI ROVERE - Solid oak - Roble macizo



MAR01
Rovere sbiancato
Whitened oak
Roble blanqueado



MAR02
Rovere wengè
Wenge-stain oak
Roble wengué



MAR03
Rovere naturale
Natural oak
Roble natural



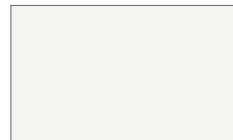
MAR04
Rovere verniciato ocra
Ochre painted oak
Roble pintado ocra



MAR05
Rovere verniciato bordeaux
Bordeaux painted oak
Roble pintado bordeaux



MAR06
Rovere verniciato antracite
Anthracite painted oak
Roble pintado antracite



MAR07
Rovere verniciato bianco
White painted oak
Roble pintado blanco



MAR08
Rovere laccato grigio siliceo
Silica grey lacquered oak
Roble lacado gris siliceo



MAR09
Rovere laccato nero
Black lacquered oak
Roble lacado negro



MAR10
Rovere laccato rosso
Red lacquered oak
Roble lacado rojo



MAR11
Rovere laccato giallo
Yellow lacquered oak
Roble lacado amarillo

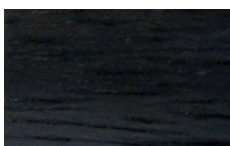


MAR12
Rovere laccato verde
Green lacquered oak
Roble lacado verde



MAR13
Rovere laccato blu Capri
Capri blue lacquered oak
Roble lacado azul Capri

MASSELLO DI IROKO - Solid Iroko wood - Iroko macizo



IRK01
Tinto nero
Black painted
Pintado negro

PRECOMPOSTO MDF - Multilaminar wood MDF - Precompuesto de Fibra de Densidad Media



MDF02
Laccato nero gofrato
Embossed black lacquered
Lacado negro en relieve



MDF03
Laccato bianco gofrato
Embossed white lacquered
Lacado bianco en relieve



MDF04
Laccato sabbia gofrato
Embossed sand lacquered
Lacado arena en relieve



MDF05
Laccato antracite gofrato
Embossed anthracite lacquered
Lacado antracita en relieve



MDF06
Impiallacciato rovere sbiancato
Whitened oak veneer
Roble blanqueado macizo



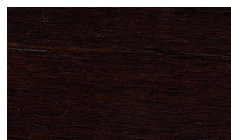
MDF07
Impiallacciato rovere wengè
Wenge-stain oak veneer
Roble wengué macizo



MDF08
Impiallacciato rovere naturale
Natural oak veneer
Roble natural macizo

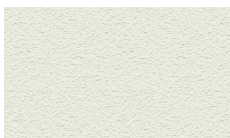


MDF09
Impiallacciato faggio naturale
Natural beech veneer
Haya natural macizo



MDF10
Impiallacciato faggio wengè
Wenge-stain beech veneer
Haya wengué macizo

LAMINATI - Laminates - Laminado



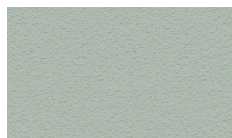
LA01 Bianco - White - Blanco



LA02 Nero - Black - Negro



LA03 Rosso veneziano - Venetian red - Rojo veneciano



LA04 Grigio nube - Cloud grey - Gris nube

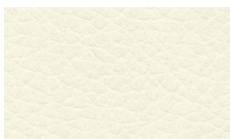


LA05 Blu oltremare - Ultramarine blue - Azul ultramarino

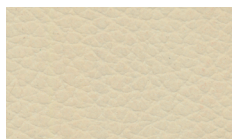


LA06 Giallo uovo - Egg yellow - Amarillo huevo

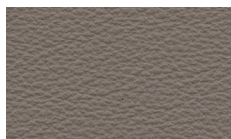
PELLE FIORE - Full-grain leather - Piel flor



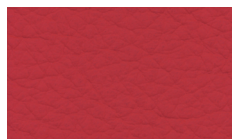
PW Bianco - White - Blanco



PB Avorio - Ivory - Marfil



PT Tortora - Dove grey - Tórtola



PR Rosso - Red - Rojo



PTM Testa di moro - Dark brown - Marrón oscuro



PN Nero - Black - Negro

ECOPELLE - Eco leather - Simil piel

Composizione 76%PVC - 2%PU - 22%PES
 Altezza 140 cm
 Peso: m2 540 +/-10
 Martindale cicli (ISO 5470-2): 60000
 Solidità colori allo sfregamento a secco (ISO 105-X12): 4/5
 Solidità colori allo sfregamento a umido ISO 105-X12: 4/5
 Solidità colori alla luce (Xenotest - blu scale) (ISO 105-B02): 6
 Adesione (ISO 2411): > 40
 Resistenza alla trazione (UNI EN ISO 1421): 600 long.
 Resistenza alla trazione (UNI EN ISO 1421): 310 trasv.
 Allungamento a rottura % (UNI EN ISO 1421): 57 long.
 Allungamento a rottura % (UNI EN ISO 1421): 120 trasv.
 Resistenza alla lacerazione (UNI EN ISO 4674): 50 long.
 Resistenza alla lacerazione (UNI EN ISO 4674): 50 trasv.
 Resistenza alle flessioni cicli (UNI 4818-13): 100000
 Test ignifugo: EN 1021-2:2006 / UNI 9175 classe 1 IM / BS5852-1:1979 part I - TB 117:2013

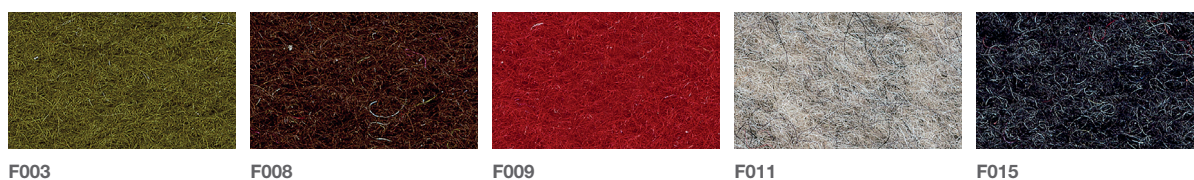
Composition: 76%PVC - 2%PU - 22%PES
 Width: 140 cm
 Weight: gr./m2 540 +/-10
 Cycles (ISO 5470-2): 60000
 Colour fastness to dry rubbing (ISO 105-X12): 4/5
 Colour fastness to wet rubbing (ISO 105-X12): 4/5
 Colour fastness to light (Xenotest - blu scale) (ISO 105-B02): 6
 Adhesion (ISO 2411): > 40
 Tensile strenght (UNI EN ISO 1421): 600 long.
 Tensile strenght (UNI EN ISO 1421): 310 trasv.
 Elongation at break % (UNI EN ISO 1421): 57 long.
 Elongation at break % (UNI EN ISO 1421): 120 trasv.
 Tear strenght (UNI EN ISO 4674): 50 long.
 Tear strenght (UNI EN ISO 4674): 50 trasv.
 Cycles (UNI 4818-13): 100000
 Fireproof test: EN 1021-2:2006 / UNI 9175 classe 1 IM / BS5852-1:1979 part I - TB 117:2013

Composición: 76%PVC - 2%PU - 22%PES
 Altura: 140 cm
 Peso: gr./m2 540 +/-10
 Ciclos (ISO 5470-2): 60000
 Solidez del color al frote seco (ISO 105-X12): 4/5
 Solidez del color al frote húmedo (ISO 105-X12): 4/5
 Solidez del color a la luz (Xenotest - blu scale) (ISO 105-B02): 6
 Adhesión (ISO 2411): > 40
 Resistencia a la tracción (UNI EN ISO 1421): 600 long.
 Resistencia a la tracción (UNI EN ISO 1421): 310 trasv.
 Alargamiento a la rotura % (UNI EN ISO 1421): 57 long.
 Alargamiento a la rotura % (UNI EN ISO 1421): 120 trasv.
 Alargamiento al desgarro (UNI EN ISO 4674): 50 long.
 Alargamiento al desgarro (UNI EN ISO 4674): 50 trasv.
 Cycles (UNI 4818-13): 100000
 Test Prueba ignifugo: EN 1021-2:2006 / UNI 9175 classe 1 IM / BS5852-1:1979 part I - TB 117:2013



FELTRO - Felt - Fieltro

100% Lana - 100% Wool - 100% Lana



CANVAS KVADRAT

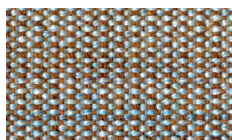
kvadrat

Designer: Giulio Ridolfo
 Composizione: 90% Lana Vergine pettinata, 10% nylon
 Altezza: 140 cm
 Cimossa: ↓
 Peso: 480 g/mtl
 Resistenza alla luce: 6-7 (ISO 1-8)
 Abrasione: 100000 Martindale
 Colore: possono riscontrarsi lievi differenze
 L'ambiente: In accordo con le normative ambientali EU

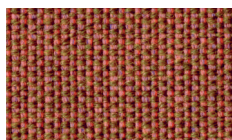
Designer: Giulio Ridolfo
 Composition: 90% New wool worsted, 10% Nylon
 Height: 140 cm
 Selvedge: ↓
 Weight: 480 g/mtl
 Light resistance: 6-7 (ISO 1-8)
 Abrasion: 100000 Martindale
 Colour: there may be slight differences
 The environment: In compliance with EU environmental regulations

Designer: Giulio Ridolfo
 Composición: 90% lana virgen, 10% nylon
 Altura: 140 cm
 Orillo: ↓
 Peso: 480 g/mtl
 Resistencia a la luz: 6-7 (ISO 1-8)
 Abrasión: 100000 Martindale
 Color: pueden verificarse lieves diferencias
 El ambiente: De acuerdo con las normativas ambientales EU

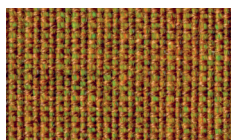
Test ignifugo - Fireproof test - Test Prueba ignifugo:
 AS/NZS 1530.3
 BS 5852 ig. s. 2-3
 DIN 4102 B2
 EN 1021-1/2
 IMO A.652(16)
 NF D 60 013
 NFPA 260
 UNI 9175 11M
 US Cal. Tech. Bull. 117
 ONORM B1/Q1



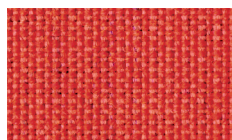
CV244



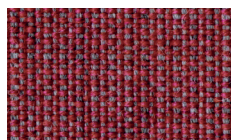
CV454



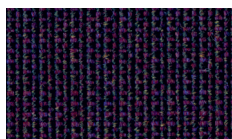
CV424



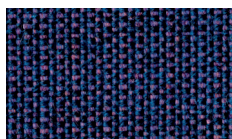
CV644



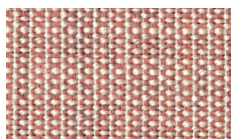
CV654



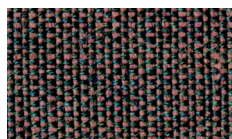
CV694



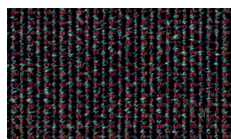
CV684



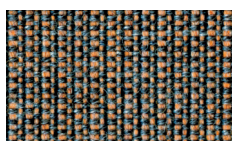
CV614



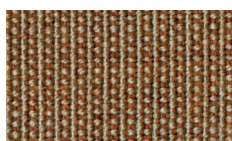
CV674



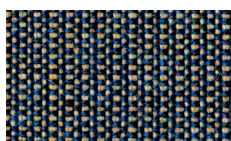
CV374



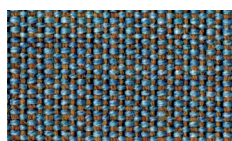
CV264



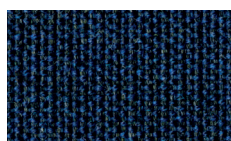
CV254



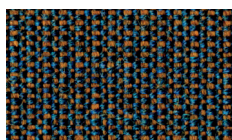
CV854



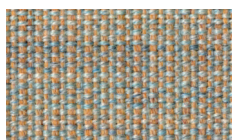
CV734



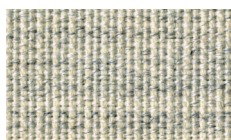
CV794



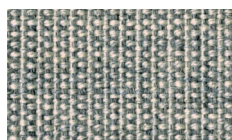
CV764



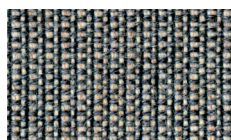
CV224



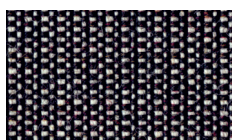
CV114



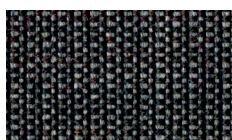
CV124



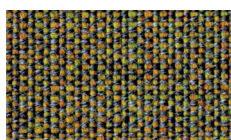
CV134



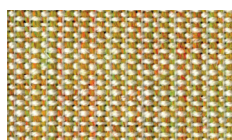
CV154



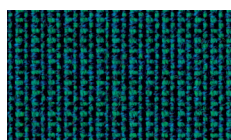
CV174



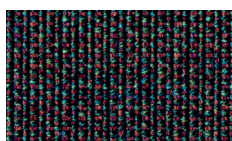
CV964



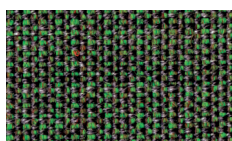
CV414



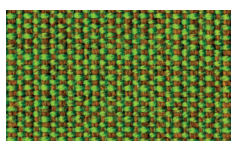
CV984



CV364



CV974



CV954

CAVA 3 KVADRAT

Designer: Anne Gry
 Composizione: 90% Lana Vergine, 10% nylon
 Altezza: 135 cm
 Cimossa: ↓
 Peso: 460 g/mtl
 Resistenza alla luce: 5-7 (ISO 1-8)
 Abrasione: 80000 Martindale
 Colore: possono riscontrarsi lievi differenze
 Nei colori chiari possono essere presenti fibre di tonalità scure.
 L'ambiente: In accordo con le normative ambientali EU

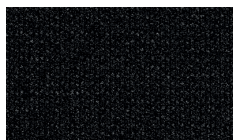
Designer: Anne Gry
 Composition: 90% New wool worsted, 10% Nylon
 Height: 135 cm
 Selvedge: ↓
 Weight: 460 g/mtl
 Light resistance: 5-7 (ISO 1-8)
 Abrasion: 80000 Martindale
 Colour: there may be slight differences
 The light colours may contain dark fibres
 The environment: In compliance with EU environmental regulations

Designer: Anne Gry
 Composizione: 90% lana virgen, 10% nylon
 Altura: 135 cm
 Orillo: ↓
 Peso: 460 g/mtl
 Resistencia a la luz: 5-7 (ISO 1-8)
 Abrasión: 80000 Martindale
 Color: pueden verificarse lieves diferencias
 En los colores claros puede haber fibras de tonalidades oscuras
 El ambiente: De acuerdo con las normativas ambientales EU

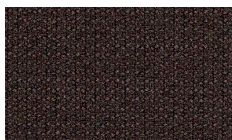
Test ignifugo - Fireproof test - Test Prueba ignifugo:
 AS/NZS 1530.3
 AS/NZS 3837 class 2
 BS 5852 ig. s. 2-3
 DIN 4102 B2, ÖNORM B1/Q1
 EN 1021-1/2
 IMO A.652(16)
 NF D 60 013
 UNI 9175, 11M
 US Cal. Tech. Bull. 117



CA142



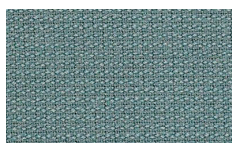
CA192



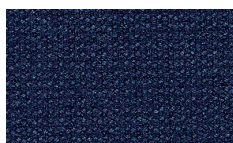
CA373



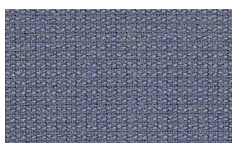
CA552



CA953



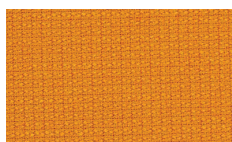
CA794



CA153



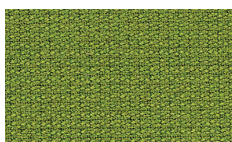
CA652



CA432



CA442



CA883



CA972

DIVINA 3 KVADRAT

Designer: Finn Sködt
 Composizione: 100% Lana
 Altezza: 150 cm
 Cimossa: ↓
 Peso: 840 g/mtl
 Resistenza alla luce: 5-7 (ISO 105-B02)
 Abrasione: 45000 Martindale
 Colore: possono riscontrarsi lievi differenze
 Nei colori chiari possono essere presenti fibre di tonalità scure.
 L'ambiente: Fibre naturali / risorsa rinnovabile

Designer: Finn Sködt
 Composition: 100% WO
 Height: 150 cm
 Selvedge: ↓
 Weight: 840 g/mtl
 Light resistance: 5-7 (ISO 105-B02)
 Abrasion: 45000 Martindale
 Colour: there may be slight differences.
 The light colours may contain dark fibres.
 The environment: Natural fibres / renewable resource

Designer: Finn Sködt
 Composizione: 100% Lana
 Altura: 150 cm
 Orillo: ↓
 Peso: 840 g/mtl
 Resistencia a la luz: 5-7 (ISO 105-B02)
 Abrasión: 45000 Martindale
 Color: pueden verificarse lieves diferencias
 En los colores claros puede haber fibras de tonalidades oscuras
 El ambiente: Fibras naturales / recurso renovable

Test ignifugo - Fireproof test - Test Prueba ignifugo:
 AS/NZS 1530.3
 BS 5852 ig. s. 5
 BS 5867, part 2, type B
 DIN 4102 B2, ÖNORM B1/Q1
 EN 1021-1/2
 EN 13501, C-s1, d0, glued
 IMO A.652(16)
 NF D 60 013
 NFPA 260
 UNI 9175, 11M
 US Cal. Tech. Bull. 117



DV106



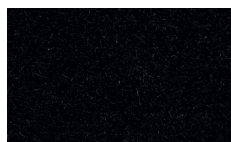
DV171



DV173



DV356



DV191



DV236



DV936



DV426



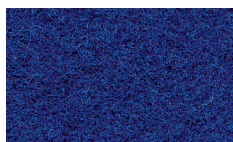
DV542



DV623



DV696



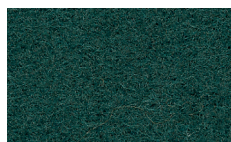
DV684



DV676



DV893



DV886

kvadrat

DIVINA MELANGE 2 KVADRAT

Designer: Finn Sködt
 Composizione: 100% Lana
 Altezza: 150 cm
 Cimossa: ↓
 Peso: 840 g/mtl
 Resistenza alla luce: 5-7 (ISO 105-B02)
 Abrasione: 45000 Martindale
 Colore: possono riscontrarsi lievi differenze
 L'ambiente: Fibre naturali / risorsa rinnovabile

Designer: Finn Sködt
 Composition: 100% WO
 Height: 150 cm
 Selvedge: ↓
 Weight: 840 g/mtl
 Light resistance: 5-7 (ISO 105-B02)
 Abrasion: 45000 Martindale
 Colour: there may be slight differences.
 The environment: Natural fibres / renewable resource

Designer: Finn Sködt
 Composición: 100% Lana
 Altura: 150 cm
 Orillo: ↓
 Peso: 840 g/mtl
 Resistencia a la luz: 5-7 (ISO 105-B02)
 Abrasión: 45000 Martindale
 Color: pueden verificarse lieves diferencias
 El ambiente: Fibras naturales / recurso renovable

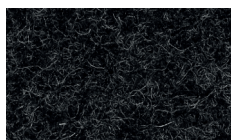
Test ignifugo - Fireproof test - Test Prueba ignifugo:
 AS/NZS 1530.3
 BS 5852 ig. s. 5
 BS 5867, part 2, type B
 DIN 4102 B2, ÖNORM B1/Q1
 EN 1021-1/2
 EN 13501, C-s1, d0, glued
 IMO A.652(16)
 NF D 60 013
 NFPA 260
 UNI 9175, 11M
 US Cal. Tech. Bull. 117



DM220



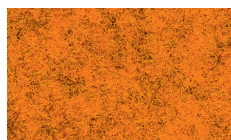
DM260



DM180



DM571



DM521



DM671



DM721



DM871



DM471



DM421

OUTBACK KVADRAT

Designer: Giulio Ridofo
 Composizione: 80% Lana Vergine, 20% nylon
 Altezza: 140 cm
 Cimossa: ↓
 Peso: 560 g/mtl
 Resistenza alla luce: 6-7 (ISO 1-8)
 Abrasione: 100000 Martindale
 Colore: possono riscontrarsi lievi differenze
 L'ambiente: Fibre naturali / risorsa rinnovabile

Designer: Giulio Ridofo
 Composition: 80% WO, 20% nylon
 Height: 140 cm
 Selvedge: ↓
 Weight: 560 g/mtl
 Light resistance: 6-7 (ISO 1-8)
 Abrasion: 100000 Martindale
 Colour: there may be slight differences.
 The environment: Natural fibres / renewable resource

Designer: Giulio Ridofo
 Composición: 80% Lana, 20% nylon
 Altura: 140 cm
 Orillo: ↓
 Peso: 560 g/mtl
 Resistencia a la luz: 6-7 (ISO 1-8)
 Abrasión: 100000 Martindale
 Color: pueden verificarse lieves diferencias
 El ambiente: Fibras naturales / recurso renovable

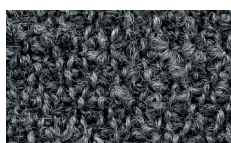
Test ignifugo - Fireproof test - Test Prueba ignifugo:
 BS 5852 ig. s. 2-3
 DIN 4102 B2,
 EN 1021-1/2
 IMO A.652(16)
 NF D 60 013
 UNI 9175, 11M
 US Cal. Tech. Bull. 117
 ÖNORM B1/Q1



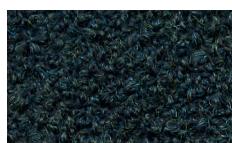
OU221



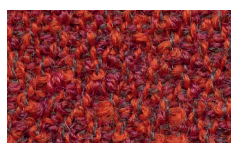
OU331



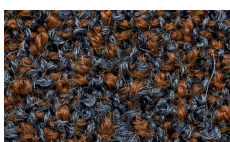
OU141



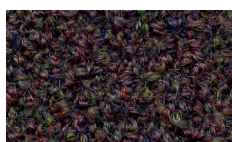
OU961



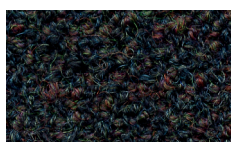
OU641



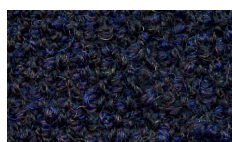
OU451



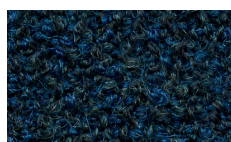
OU671



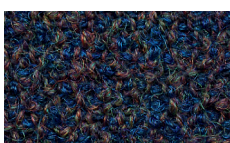
OU951



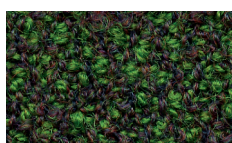
OU781



OU851



OU861



OU941

kvadrat

FLASH NO-SHRINK

Composizione: 100% PP
 Altezza totale: 140 cm (UNI EN 1773)
 Peso al metro lineare: 450 g/LM ($\pm 4\%$)
 Peso al metro quadro: 320 g/m² ($\pm 4\%$) (UNI 5114)
 Resistenza all'abrasione ("Martindale"), N° cicli: 70000 Punto finale (ISO 12947-2)
 Resistenza al pilling: 5 (ISO 12945-2)
 Resistenza alla trazione: Lunghezza 1398,87 - Altezza 1091,41 (ISO 13934-1)
 Allungamento alla rottura: Lunghezza 48,23% - 26,33% Altezza (ISO 13934-1)
 Res. allo scorrimento fili (6 mm): Lunghezza >200 - Altezza >200 (ISO 13936-1)
 Solidità del colore allo sfregamento a secco: scarica CO 4/5 (ISO 105-X12)
 Solidità del colore allo sfregamento ad umido: scarica CO 4/5 (ISO 105-X12)
 Solidità del colore alla luce. Degradato: chiari 5, medi 4, scuri 5 (ISO 105 B02)

Composition: 100% PP
 Total width: 140 cm (UNI EN 1773)
 Weight per linear meter: 450 g/LM ($\pm 4\%$)
 Weight per square meter: 320 g/m² ($\pm 4\%$) (UNI 5114)
 ("Martindale") Abrasion resistance. Rubs: 70000 End point (ISO 12947-2)
 Pilling resistance: 5 (ISO 12945-2)
 Tensile strength: Length 1398,87 - Width 1091,41 (ISO 13934-1)
 Maximum elongation: Length 48,23% - 26,33% Width (ISO 13934-1)
 Seam slippage (6 mm): Length >200 - Width >200 (ISO 13936-1)
 Colour fastness rubbing (dry): staining CO 4/5 (ISO 105-X12)
 Colour fastness rubbing (wet): staining CO 4/5 (ISO 105-X12)
 Colour fastness artificial light. Colour change: light 5, medium 4, dark 5 (ISO 105 B02)

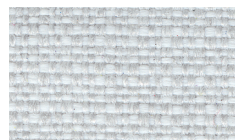
Composición: 100% PP
 Altura total: 140 cm (UNI EN 1773)
 Peso por metro: 450 g/LM ($\pm 4\%$)
 Peso por metro cuadrado: 320 g/m² ($\pm 4\%$) (UNI 5114)
 Resistencia al desgaste ("Martindale"), N° ciclos: 70000 Punto final (ISO 12947-2)
 Resistencia al pilling: 5 (ISO 12945-2)
 Resistencia a la tracción: Longitud 1398,87 - Altura 1091,41 (ISO 13934-1)
 Alargamiento a la rotura: Longitud 48,23% - 26,33% Altura (ISO 13934-1)
 Res. al desplazamiento de hilos (6 mm): Longitud > 200 - Altura > 200 (ISO 13936-1)
 Solidez del color al frote seco: descarga CO 4/5 (ISO 105-X12)
 Solidez del color al frote húmedo: descarga CO 4/5 (ISO 105-X12)
 Solidez del color a la luz. Degradación: claro 5, medio 4, oscuro 5 (ISO 105 B02)



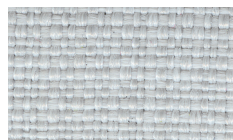
**IRRESTRINGIBILE
 NO-SHRINK
 A PRUEBA DE ENCOGIMIENTO**



FL111



FL101



FL100



FL400



FL408



FL402



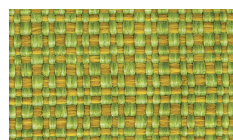
FL707



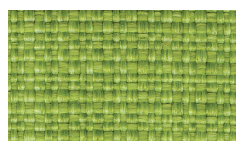
FL700



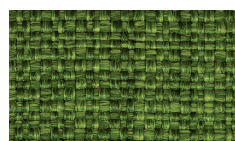
FL705



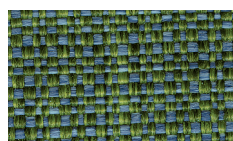
FL804



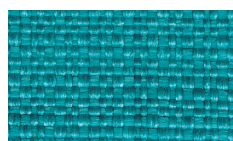
FL810



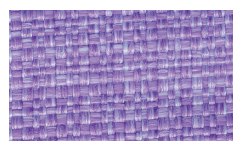
FL800



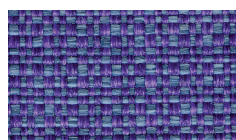
FL807



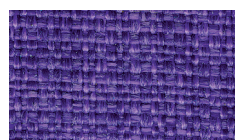
FL710



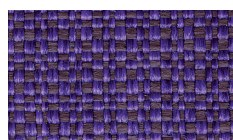
FL001



FL005



FL003



FL004



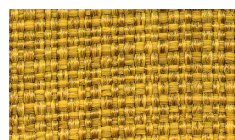
FL002



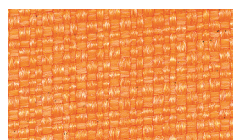
FL900



FL501



FL500



FL301



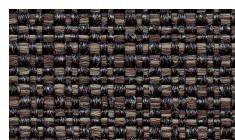
FL305



FL300



FL310



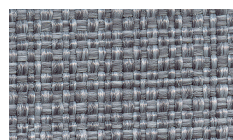
FL403



FL409



FL405



FL600



FL601



FL602



FL407



FL200

BYTE

Composizione 100% PL
 Altezza totale: 140 cm (UNI EN 1773)
 Peso al metro lineare: 460 g/LM (± 4%)
 Resistenza all'abrasione ("Martindale"), N° cicli: 30.000 Punto finale (ISO 12947-2)
 Resistenza al pilling: 4/5 (ISO 12945-2)
 Resistenza alla trazione: Lunghezza 1000 - Altezza 1300 (ISO 13934-1)
 Res. alla stramatura a <6 mm: Lunghezza >200 - Altezza >200 (ISO 13936-1)
 Solidità del colore allo sfregamento a secco: scarica CO 4/5 (ISO 105-X12)
 Solidità del colore allo sfregamento ad umido: scarica CO 4/5 (ISO 105-X12)
 Solidità del colore alla luce: 3/4 (ISO 105 B02)

Composition 100%PL
 Total width: 140 cm (UNI EN 1773)
 Weight per linear meter: 460 g/LM (± 4%)
 ("Martindale") Abrasion resistance, Rubs: 30.000 End point (ISO 12947- 2)
 Pilling resistance: 4/5 (ISO 12945-2)
 Tensile strength: Length 1000 - Width 1300 (ISO 13934-1)
 Seam slippage at less than 6 mm: Length >200 - Width >200 (ISO 13936-1)
 Colour fastness rubbing (dry): staining CO 4/5 (ISO 105-X12)
 Colour fastness rubbing (wet): staining CO 4/5 (ISO 105-X12)
 Colour fastness artificial light: 3/4 (ISO 105 B02)

Composición: 100% PL
 Altura total: 140 cm (UNI EN 1773)
 Peso por metro: 460 g/LM (± 4%)
 Resistencia al desgaste ("Martindale"), N° ciclos: 30.000 Punto final (ISO 12947-2)
 Resistencia al pilling: 4/5 (ISO 12945- 2)
 Resistencia a la tracción: Longitud 1000 - Altura 1300 (ISO 13934-1)
 Res. a deshilachado a <6 mm: Longhezza >200 - Altura >200 (ISO 13936-1)
 Solidez del color al frote seco: descarga CO 4/5 (ISO 105-X12)
 Solidez del color al frote húmedo: descarga CO 4/5 (ISO 105-X12)
 Solidez del color a la luz: 3/4 (ISO 105 B02)

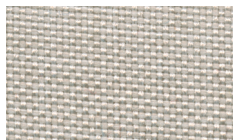


IRRESTRINGIBILE
NO-SHRINK
A PRUEBA DE ENCOGIMIENTO

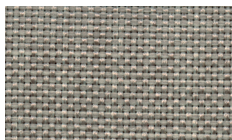
IDROREPELENTE
WATER-REPELLENT
REPELENTE AL AGUA



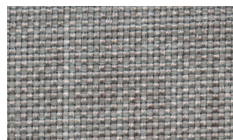
BY100



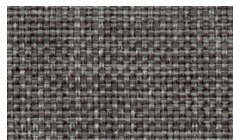
BY400



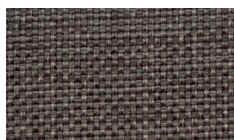
BY401



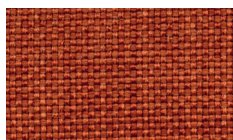
BY605



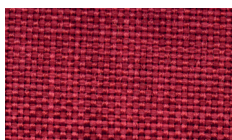
BY600



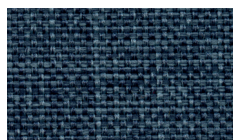
BY402



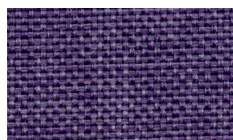
BY307



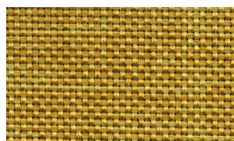
BY303



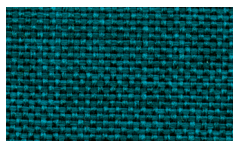
BY707



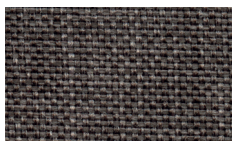
BY003



BY804



BY700



BY403



BY405



BY602

ALLUMINIO - Aluminium - Aluminio



AL01
 Alluminio verniciato gofrato bianco
 White embossed painted aluminium
 Aluminio pintado en relieve blanco



AL02
 Alluminio verniciato gofrato sabbia
 Embossed sand painted aluminium
 Aluminio pintado en relieve arena



AL03
 Alluminio verniciato gofrato antracite
 Embossed anthracite painted aluminium
 Aluminio pintado en relieve antracita



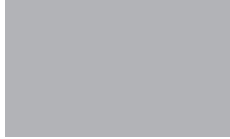
AL04
 Alluminio verniciato bianco lucido
 Polished white painted aluminium
 Aluminio pintado blanco brillante



AL05
 Alluminio verniciato nero
 Black painted aluminium
 Aluminio pintado negro



AL08
 Alluminio verniciato rosso
 Red painted aluminium
 Aluminio pintado rojo



AL07
 Alluminio lucidato
 Polished aluminium
 Aluminio pulido

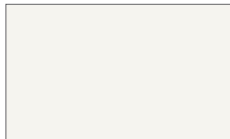
ACCIAIO - Steel - Acero



AC01
 Cromato
 Chromium-plated
 Cromado



AC02
 Satinato
 Satin-finish
 Satinado



AC101
 Acciaio verniciato bianco
 White painted steel
 Acero pintado blanco



AC102
 Acciaio verniciato nero
 Black painted steel
 Acero pintado negro



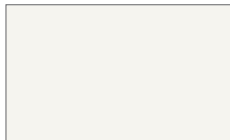
AC114
 Acciaio verniciato rosso
 Red painted steel
 Acero pintado rojo



AC11
 Acciaio verniciato antracite
 Anthracite painted steel
 Acero pintado antracita



ACGL
 Acciaio verniciato grigio lucido
 Polished grey painted steel
 Acero pintado gris brillante



AC20
 Acciaio verniciato gofrato bianco
 White embossed painted steel
 Acero pintado en relieve bianco



AC07
 Acciaio verniciato gofrato grigio
 Embossed grey painted steel
 Acero pintado en relieve gris



AC1016
 Acciaio verniciato Goffrato giallo
 Embossed yellow painted steel
 Acero pintado en relieve amarillo



AC514
 Acciaio verniciato gofrato sabbia
 Embossed sand painted steel
 Acero pintado en relieve arena



AC3020
 Acciaio verniciato gofrato rosso
 Embossed red painted steel
 Acero pintado en relieve rojo



AC03
 Acciaio verniciato gofrato nero
 Embossed black painted steel
 Acero pintado en relieve negro

ALUCOMPACT®



ALC01 Bianco - White - Blanco



ALC02 Nero - Black - Negro

NEWPANN



NEW01
Rovere grigio
Grey oak
Roble gris



NEW02
Rovere sbiancato
Whitened oak
Roble blanqueado

VETRO - Glass - Vidro



VE01
Satinato bianco
Satin-finish white
Blanco mate



VE02
Satinato antracite
Satin-finish anthracite
Antracita mate



VE03
Satinato sabbia
Satin-finish sand
Arena satinado



VE04
Bianco
White
Blanco



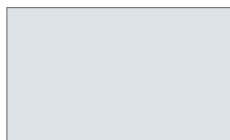
VE05
Nero
Black
Negro



VE06
Extra white
Extra white
Extra white



VE07
Verde acidato
Frosted green
Verde acidado



VE08
Cristallo trasparente
Clear glass
Cristal transparente



www.infinitidesign.it

OMP s.r.l. Via Ca' Leoncino, 2 - 31030 Castello di Godego (TV) Italy
Tel. +39 0423/7616 - Fax +39 0423/761700 - www.infinitidesign.it - info@infinitidesign.it